

A full-page advertisement featuring three runners (two men and one woman) ascending a wide set of concrete stairs. The woman is on the left in a black singlet and shorts, the man in the middle is in a blue 361° t-shirt and black shorts, and the man on the right is in a white 361° singlet and black shorts. They are all wearing 361° running shoes. The background shows a modern building with large windows.

# 361°

ONE DEGREE BEYOND™

**BEYOND  
YOUR  
EXPECTATIONS**

**FW20**



## 361°, MORE THAN JUST A BRAND LOGO

What is the meaning of our brand logo 361°? What does that 'ONE DEGREE BEYOND' really mean? We have to answer this question many times to people who do not know us yet. And every time we do we actually don't talk about ourselves but refer to you.

### **We believe you can do more than you think you can**

You are our inspiration. You, that person who wasn't able to run 5K. You that athlete that wasn't able to run a sub 3 hour marathon. You who is struggling to get back into a healthy lifestyle. You who has been running for more than 1500 days in a row. You are all our inspiration. That is exactly why we created our ambassador program; to give a voice and share the experience of people who do more than they think they can.

### **#BEYONDEXPECTATIONS**

We answer those initial questions with #beyondd expectations. It's our way of supporting those who go one degree beyond, those who dare to want more. At 361° we are always interested and looking for people who know how it feels to go 'beyond expectations'. Contact us if you want to become an ambassador! [info@361europe.com](mailto:info@361europe.com)

Keep going!  
Team 361° Europe







## HASPA HAMBURG MARATHON

This race is one of the fastest spring marathons and features a beautiful course running through the eclectic mix of very distinctive Hamburg neighbourhoods. Lot's of residents will cheer for you along the course and you will feel the crowds push you to the finish! 361° is a proud partner of the Haspa Hamburg Marathon, you will find us in the local prep runs, with the pacemakers, on the expo and throughout the course.

## PROJEKT19/19

Our ambassador Anthony Horyna is a streak runner. He runs everyday. He's been running every day for more than 3 years and has done several ultra trail marathons. And before he wasn't a runner. Running helped him beat negative self thoughts, anxiety and depression. Anthony started Projekt19/19 to raise awareness and to motivate people to try running as part of the way to beat depression. He ran from the Swiss border to the Danish border; 45 marathons in 45 days. He was wearing a standard pair of the 361-Meraki and used about 4 pairs in his journey. For more information: [Projekt1919.de](http://Projekt1919.de)

# INDEX

**361° AMBASSADORS** 6

**TECHNICAL FEATURES** 8

**STABILITY** 10

361° STRATA 4  
361° SENSATION 4  
361° NEMESIS

**NEUTRAL** 18

361° SPIRE 4  
361° MERAKI 3

**SPEED** 24

361° FEISU 2  
361° PACER ST  
361° CHASER 2

**TRAIL** 32

361° YUSHAN  
361° YUSHAN WP  
361° TAROKO 2

**TRAINING** 40

361° QUEST TR

**CORE BENEFITS** 44

**SIZE CONVERSION CHART** 45

**MERCHANDISE MATERIAL** 46

**MARKETING SUPPORT** 47

## 361° AMBASSADORS

The 361° Ambassador program is an embodiment of our commitment to enabling everyday runners and athletes to define their own standard of success, break down barriers and achieve more than they thought possible. Our runners are people of all abilities who share a passion for rejecting external measures of achievement by creating and fulfilling their own potential and possibilities. Happy to introduce them.

### DANIEL

*France, Financial Consultant*

"Running started 9 years ago to relieve me from this amazing but stressful & busy work-life. It's my therapy. I like to try to inspire people to try as hard as they can to go after something. We will not always have what we want but we might reach somewhere pretty cool just by trying it.

And regarding the exact question, what motivates me? I would say my wife and my baby girl. For sure!"



### MARIE-LOUISE

*United Kingdom, Procurement Manager*

"I love being a 361° ambassador, because at 361° the emphasis is on achieving your own goals, and beating your own expectations. It isn't about comparing yourself to others. This is something I have learned in my journey as a runner, and it is really true that the most satisfaction comes from going beyond your own expectations to achieve things you yourself thought you were not able to achieve. I am motivated to go beyond expectations because I so passionately want to show other people that they can do it too! I hope it inspires others to take action and have the self belief to push their own boundaries."



**"I LOVE BEING A 361°  
AMBASSADOR, BECAUSE AT 361°  
THE EMPHASIS IS ON ACHIEVING  
YOUR OWN GOALS, AND BEATING  
YOUR OWN EXPECTATIONS."**

### MATHIAS

*Germany, Key Account Manager*

"I started running exactly 10 years ago and in the meantime it is more than sport for me. Running is freedom and there is no better feeling than running along the elbe. No matter what weather, temperature or daytime. I qualified for the Ironman World Championship and I am happy to have the best shoes to support me. "

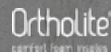




## TECHNICAL FEATURES

### ORTHOLITE INSOLES

The open cell structure provide a high level of long lasting comfort. excellent breathability and moisture management



### QUIK COMFORT INSOLE

Designed using our proprietary foam material. Molded to provide immediate step-in-comfort and increase cushioning while in motion.

### MORPHIT SLEEVE

An internal fit sleeve contours to the foot providing an enhanced supportive ride during dynamic movement.

### MORPHIT

Internal and/or external upper multi-dimensional fit systems that work in unison with the platform, promoting natural foot motion.



### STAY PUT TONGUE LOCK

An integrated design that eliminates shoe tongue migration during dynamic foot motion, while keeping the foot snug and secure on every stride.

### NEWLY DESIGNED PRESSURE FREE TONGUE

Construction perfectly contours the instep of the foot avoiding tongue migration and irritation.

### MORPHIT LACING SYSTEM

A multi-dimensional lacing design that fits dynamically with the foot, providing superior support and comfort during loading at mid-stance phase.

### QUIKFOAM

An EVA rubber blend with PU coating that delivers a dynamic cushioning experience. Proven to maintain the same high level of energy return and long-lasting comfort throughout the life of the shoe.

**QUIKFOAM**

### QUIKSPRING+

An EVA foam designed to provide more rebound and comfort in a lightweight package.

**QUIK SPRING+**

### QUIK FLEX 4FOOT ENGINEERING

Developed to address the natural movement of the metatarsals in the foot. Flex grooves are positioned to mimic the motion of the foot to provide more natural and balanced toe-off. Enhanced ground contact designed for better traction and acceleration.

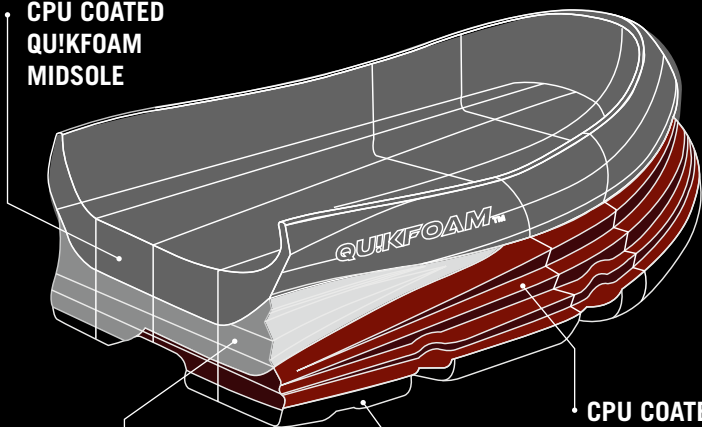
### QUIK SPINE

A lightweight and dynamically engineered mid-foot shank that provides the perfect blend of stability and support.



# 361° SYSTEM

### CPU COATED QUIKFOAM MIDSOLE



### CPU COATED QUIKFOAM MIDSOLE

### EVA MIDSOLE OR QUIKSPRING +

### RUBBER OUTSOLE



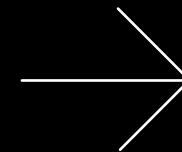


# STABILITY

**“AMAZING PEOPLE CRATE JUST EPIC MOMENTS TOGETHER, IT’S ALL ABOUT PARTNERSHIP. HAMBURG IS THE PLACE AND AGAIN SPENDING SUCH PASSIONED DAYS WITH MY 361° AMBASSADOR COLLEAGUES AND SALES REPRESENTATIVES. THANKS TO 361° EURPE FOR YOUR TURST IN US AND MAKING THIS HAPPENING.”**

**AMBASSADOR KRISTER WIKLUND**

361° STRATA 4  
361° SENSATION 4  
361° NEMESIS



# STRATA 4



**M** Y018-6709  
Y028-6709 (2E)  
**NEW** Poseidon/Black



## RUNNING PROFILE

The pinnacle in stability; this mid-to-high mileage trainer is designed to provide protective comfort and support mile after mile.

## FEATURE / BENEFIT

- MORPHIT Upper Lacing System – an enhanced and simplified multi-dimensional lacing design that comfortably harnesses the foot securely during dynamic movement.
- Newly designed Pressure Free Tongue - construction perfectly contours the instep of the foot avoiding tongue migration and irritation.
- Engineered midfoot interior construction utilizes a distinct pattern both medially and laterally to support the foot during stance phase and dynamic movement.
- Ortholite insoles utilize 20% recycled content while still retaining the performance fit and comfort that runners want.
- Medial post paired with external TPU QU!K Spine provides dynamic stability and integrated support.
- QU!K Spring+, an EVA foam designed to provide more rebound, reduced compression and a resistance to extreme temperatures.
- QU!KFOAM, a midsole material comprised of an EVA rubber blend with PU coating that provides excellent durability, cushioning and responsiveness.



**M** Y018-0009  
**NEW** White/Black



**W** Y068-0607  
Y078-0607(D)  
**NEW** Sleet/Ebony



**W** Y068-6265  
**NEW** Blue sapphire/Peacoat

**M** **Size:**  
7-13, 14  
**Weight:**  
334g  
**Drop:**  
8mm  
**Stack:**  
F/F: 18mm  
R/F: 26mm

**W** **Size:**  
6-12  
**Weight:**  
274g  
**Drop:**  
8mm  
**Stack:**  
F/F: 18mm  
R/F: 26mm





# SENSATION 4



**M** Y906-3109  
**NEW** Risk red/Black



## RUNNING PROFILE

Mild stability platform for those who want to experience a more dynamic ride. Featuring a Morphit sleeve providing a secure midfoot fit.

## FEATURE / BENEFIT

- Lightweight and seamless double jacquard mesh for maximum ventilation and comfort.
- Forefoot offers a newly designed vamp with more volume promoting natural foot movement and increased efficiency.
- Providing an enhanced supportive and superior fit, the MORPHIT Sleeve construction contours to the foot at midstance.
- Pressure Free Tongue is designed to provide excellent comfort avoiding any chance for irritation during flexion.
- Dynamic stability is achieved by pairing a medial post with our integrated lightweight QU!K Spine shank for support.
- QU!K Flex 4Foot Engineering provides for a natural and balanced toe off and enhances ground contact for better acceleration
- Powered by full length QU!KFOAM midsole to provide excellent cushioning and a smooth comfortable ride.



**M** Y906-6970  
Y916-6970 (2E)  
**Storm/Midnight**



**W** Y956-7409  
**NEW** Pool green/Black



**W** Y956-0607  
Y966-0607 (D)  
**Sleet/Ebony**



**M** Y906-6409  
**Jewel/Ebony**



**W** Y956-1109  
**Lotus/Ebony**

**M** **Size:**  
7-13,14  
**Weight:**  
292g  
**Drop:**  
9mm  
**Stack:**  
F/F: 16.2mm  
R/F: 25.2mm

**W** **Size:**  
6-12  
**Weight:**  
243g  
**Drop:**  
9mm  
**Stack:**  
F/F: 16.2mm  
R/F: 25.2mm





# NEMESIS



**M** Y910-0907  
**NEW** Black/Ebony



## RUNNING PROFILE

The 361°-Nemesis was created based on popular demand. The need for a classic stable everyday trainer is now fulfilled. A proven-and-tested platform featuring an extended medial post provides a stable and secure feeling.

## FEATURE / BENEFIT

- Breathable engineered mesh with open toe box design.
- Externally the midfoot utilizes a distinct overlay pattern to hold the foot secure.
- Pressure Free Tongue is designed to provide excellent comfort avoiding any chance for irritation during flexion.
- Dynamic stability is achieved by pairing an extended medial post with our integrated lightweight QU!K Spine shank for support.
- QU!K Flex 4Foot Engineering provides for a natural and balanced toe off and enhances ground contact for better acceleration
- Powered by full length QU!KFOAM midsole to provide excellent cushioning and a smooth comfortable ride.
- Lightweight blown rubber forefoot with a durable high abrasive resistant crash pad patterned to provide the best traction and shock dispersion.



**M** Y910-6870  
Moonlight Blue/Midnight



**W** Y960-0907  
**NEW** Black/Ebony



**W** Y960-5670  
Aqua/Midnight



**M** Y910-0809  
Y913-0809 (2E)  
Castlerock/Black



**W** Y960-6909  
Y963-6909 (D)  
Storm/Black

**M** **Size:**  
7-13,14  
**Weight:**  
298g  
**Drop:**  
9mm  
**Stack:**  
F/F: 17.5mm  
R/F: 26.5mm

**W** **Size:**  
6-12  
**Weight:**  
246g  
**Drop:**  
9mm  
**Stack:**  
F/F: 17.5mm  
R/F: 26.5mm







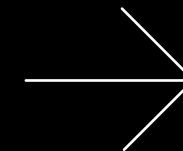
“  
**HARD  
WORK  
DOES PAY  
OFF!**  
”

DONALD HILLEBREGT;  
NATIONAL CHAMPION TRIATHLON SPRINT DISTANCE



# NEUTRAL

361° SPIRE 4  
361° MERAKI 3





# SPIRE 4



**M** Y001-0731  
**NEW** Ebony/Risk red



## RUNNING PROFILE

Ultimate comfort is the concept behind this top of the range neutral running shoe. This 4th version now provides even more comfort through new midsole materials and an updated Ortholite insole.

## FEATURE / BENEFIT

- Upper features a breathable knitted upper with a roomier vamp promoting more ventilation and natural foot movement.
- MORPHIT construction in the mid-foot and heel to provide a comfortable, secure and supportive environment.
- Pressure Free Tongue is designed to provide comfort and avoid irritation during flexion.
- Ortholite insoles utilize 20% recycled content while still retaining the performance fit and comfort that runners want.
- The QU!K Spine is a carbon fiberglass shank that adds linear integrity to the mid-foot.
- QU!K Flex 4Foot Engineering provides for a natural and balanced toe-off and enhances ground contact for better acceleration.
- QU!K Spring+, an EVA foam designed to provide more rebound and comfort in a lightweight package.
- QU!KFOAM, a midsole material comprised of an EVA rubber blend with PU coating that provides excellent durability, cushioning and responsiveness.



**M** Y001-6906  
**NEW** Black Iris/Sleet



**M** Y001-6490  
Jewel/Spark



**W** Y051-0754  
**NEW** Ebony/Paradise



**M** Y011-0407 (2E)  
Microchip/Ebony



**W** Y051-6903  
**NEW** Black iris/Silver



**W** Y061-0753 (D)  
Ebony/Glass



**W** Y051-7362  
Green Ash/Sea

**M**

**Size:**  
7-13,14

**Weight:**  
286g

**Drop:**  
9mm

**Stack:**  
F/F: 16.2mm  
R/F: 25.2mm

**W**

**Size:**  
6-12

**Weight:**  
232g

**Drop:**  
9mm

**Stack:**  
F/F: 16.2mm  
R/F: 25.2mm

# MERAKI 3



**M** Y007-6965  
**NEW Storm/Peacoat**



## RUNNING PROFILE

A dynamic neutral running experience that makes you feel faster. We have now added the Ortholite sockliner to raise the level of comfort even higher.

## FEATURE / BENEFIT

- Upper features a seamless engineered mesh for a lighter, sleeker and more comfortable fit.
- MOPRHIT midfoot interior utilizes a distinct pattern of soft yet durable materials to hold the foot securely while the heel is designed to help lock and support the rearfoot.
- Pressure Free Tongue is designed to provide comfort and avoid irritation during flexion.
- Ortholite insoles utilize 20% recycled content while still retaining the performance fit and comfort that runners want.
- The QU!K Spine is a carbon fiberglass shank that adds linear integrity to the mid-foot.
- QU!K Flex 4Foot Engineering provides for a natural and balanced toe-off and enhances ground contact for better acceleration.
- QU!KFOAM, a midsole material comprised of an EVA rubber blend with PU coating that provides excellent durability, cushioning and responsiveness.



**M** Y007-0907  
Y017-0907(2E)  
**Black/Ebony**



**M** Y007- 7099  
**Midnight/Jolt**



**W** Y057-0907  
Y067-0907 (D)  
**Black/Ebony**

**M** **Size:**  
7-13,14  
**Weight:**  
290g  
**Drop:**  
9mm  
**Stack:**  
F/F: 16.2mm  
R/F: 25.2mm



**W** Y057-3039  
**NEW Deco Rose/Potent Purple**

**W** **Size:**  
6-12  
**Weight:**  
245g  
**Drop:**  
9mm  
**Stack:**  
F/F: 16.2mm  
R/F: 25.2mm







**“BEHIND THE CURTAINS OF BECOMING A CHAMPION.FAILURE, DISAPPOINTMENT, FRUSTRATION, SWEAT, TEARS... NOBODY SEES THE HARD WORK. THERE ARE HARD TRAININGS DAYS. ON SOME DAYS YOUR MIND SAYS, “I CAN’T DO THIS“. THAT’S A HARD MENTAL TRAINING DAY. YOU MUST TRAIN YOUR MENTAL FITNESS TO GET THROUGH THIS. THESE ARE THE DAYS THAT ULTIMATELY DETERMINE YOUR SUCCESS AS AN ATHLETE. BELIEVE TO ACHIEVE. YOU WON’T ACHIEVE YOUR GOAL IF YOU DON’T BELIEVE YOU CAN. ACHIEVING BIG DREAMS DEMANDS THE BEST OF YOU.”**

**TOM OOSTERDIJK - FROM FAT TO FAST IN 27 MONTHS**

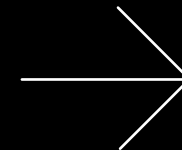


# SPEED

361° FEISU 2

361° PACER ST

361° CHASER 2





## RUNNING PROFILE

Feisu means 'fast'! The product was designed and developed for top athletes. This new version incorporates feedback and input from top athletes around the world.

## FEATURE / BENEFIT

- Upper features an engineered seamless mesh upper that breathes with speed as well as a superior fit to hug and hold the foot.
- MOPRHIT interior microfiber mid-foot structure contours the foot to add a perfect blend of support.
- A new outsole configuration featuring a lightweight engineered blown rubber in the forefoot and a durable carbon rubber in the heel for a speedy and stable ride.
- QU!K Flex 4Foot Engineering provides for a natural and balanced toe-off and enhances ground contact for better acceleration.
- Our lightest trainer of the speed range.

# FEISU 2



**M** Y003-0061  
White/Ocean Blue



**W** Y053-0061  
White/Ocean Blue



**M**

**Size:**  
7-13,14

**Weight:**  
204g

**Drop:**  
9mm

**Stack:**  
F/F: 13mm  
R/F: 22mm

**W**

**Size:**  
6-12

**Weight:**  
165g

**Drop:**  
9mm

**Stack:**  
F/F: 13mm  
R/F: 22mm



# PACER ST



**M** Y004-9091  
Spark/Gecko



## RUNNING PROFILE

Right between your everyday trainer and a racing flat. The Pacer carries the perfect balance between 'SOFT & FAST' for those who want to improve their FAST while still relying on the key features to provide comfort.

## FEATURE / BENEFIT

- The upper features a double jacquard mesh upper for breathability.
- MOPRHIT interior microfiber mid-foot structure contours the foot to add a perfect blend of support.
- Pressure Free Tongue is designed to provide comfort and avoid irritation during flexion.
- Ortholite insoles utilize 20% recycled content while still retaining the performance fit and comfort that runners want.
- A propulsion plate is placed under the mid-foot through the forefoot to provide dynamic stability and assist in acceleration during gait.
- A new outsole configuration featuring a lightweight engineered blown rubber in the forefoot and a durable carbon rubber in the heel for a speedy and stable ride.
- QU!K Spring+, an EVA foam designed to provide more rebound and comfort in a lightweight package.
- QU!KFOAM, a midsole material comprised of an EVA rubber blend with PU coating that provides excellent durability, cushioning and responsiveness.



**W** Y054-9062  
Spark/Sea

**M**

**Size:**  
7-13, 14

**Weight:**  
264g

**Drop:**  
9mm

**Stack:**  
F/F: 13mm  
R/F: 22mm

**W**

**Size:**  
6-12

**Weight:**  
216g

**Drop:**  
9mm

**Stack:**  
F/F: 13mm  
R/F: 22mm





## RUNNING PROFILE

Lightweight and cushioned just enough to get you quickly from tempo workouts to race day results.

## FEATURE / BENEFIT

- Seamless breathable air mesh upper
- Pressure Free Tongue designed to provide comfort and avoid irritation
- The QU!K spine is a carbon fiber plate that adds integrity to the midfoot
- Blown rubber forefoot for lightweight traction and durable carbon rubber heel pods
- Powered by QU!KFOAM

# CHASER 2



**M** Y807-9909  
Jolt / Black



**W** Y857-9309  
Hazard / Black



**M**

**Size:**  
7-13,14

**Weight:**  
232g

**Drop:**  
8mm

**Stack:**  
F/F: 13 mm  
R/F: 22 mm

**W**

**Size:**  
6-12

**Weight:**  
232g

**Drop:**  
8mm

**Stack:**  
F/F: 13 mm  
R/F: 22 mm





**“TRAIN AS MUCH AS YOU WANT,  
BUT A STEEP CLIMB ALWAYS  
REQUIRES GREAT PHYSICAL AND  
MENTAL EFFORT. BUT THE  
SATISFACTION YOU GET WHEN  
YOU REACH THE SUMMIT IS  
ALWAYS SPECIAL AND REPAYS  
US FOR EVERYTHING, ESPECIALLY  
IF YOU CAN ENJOY A SPLENDID  
VIEW.”**

**AMBASSADOR GIORGIO PULCINI  
- FINISHER TOR DES GÉANTS® 2018 AND UTMB 2019**

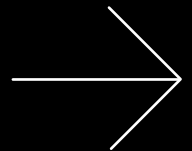


# TRAIL

361° YUSHAN WP

361° YUSHAN

361° TAROKO 2





## RUNNING PROFILE

Built to take on a variety of rugged terrains and weather conditions, the 361-YUSHAN WP is a vehicle for tackling mid-to-high mileage trail runs and delivers pure performance at all levels.

## FEATURE / BENEFIT

- One-piece reinforced durable knit upper that provides a supportive contoured fit
- A single-layer waterproof membrane on the interior of the upper provides a perfect barrier that eliminates water infiltration, keeping the foot dry and comfortable
- Tongue-wing construction controls debris and reduces water penetration near the laces and tongue
- BIGTOE-Shield is a light, flexible and durable material placed on the interior of the vamp to help reduce the chance for mesh tear-out during flexion
- Ultra-gripping and stability outsole lugs handle rocky technical terrain with ease
- Flexible StoneShield rock plate protection under the forefoot
- Full length QU!KFOAM midsole top-layer provides shock attenuation and a smooth ride.
- Molded QU!KFOAM insole for plush in-foot comfort
- Featuring eVent waterproof bootie construction.

# YUSHAN WP



**M** Y909-0809  
Castlerock/Black



**W** Y959-0804  
Castlerock/Microchip



**M**

**Size:**  
7-13,14

**Weight:**  
375g

**Drop:**  
8mm

**Stack:**  
F/F: 12mm  
R/F: 20mm

**W**

**Size:**  
6-12

**Weight:**  
312g

**Drop:**  
8mm

**Stack:**  
F/F: 12mm  
R/F: 20mm





## RUNNING PROFILE

Built to take on a variety of rugged terrains, the Yushan is a vehicle for tackling mid-to-high mileage train runs and delivers pure performance at all levels.

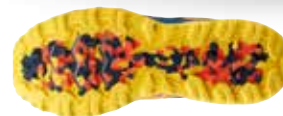
## FEATURE / BENEFIT

- One-piece durable knit upper that provides a supportive contoured fit
- BIGTOE-Shield designed under high friction point in the vamp
- Pressure Free Tongue designed to provide comfort and avoid irritation
- Powered by QU!KFOAM midsole to provide excellent cushioning and maintain a smooth comfortable ride
- Slightly rounded heel provides a smoother transition and enhances efficiency during gait
- StoneShield rock plate adds trusted protection under the forefoot.
- QU!K Flex 4foot engineering provides for natural and balanced toe off and enhances ground contact for better acceleration
- Unique trail specific outsole lug pattern grips in both muddy and rocky technical terrain

# YUSHAN



**M** Y904-2870  
Blaze/Midnight



**W** Y954-9309  
Hazard/Black

**M**

**Size:**  
7-13,14

**Weight:**  
348g

**Drop:**  
8mm

**Stack:**  
F/F: 12mm  
R/F: 20mm

**W**

**Size:**  
6-12

**Weight:**  
283g

**Drop:**  
8mm

**Stack:**  
F/F: 12mm  
R/F: 20mm



## RUNNING PROFILE

A great trail hybrid that is a perfect combination of style and performance meant to tackle and discover on and off-road adventures.

## FEATURE / BENEFIT

- A breathable and durable mesh upper provides a supportive and comfortable fit.
- MORPHIT Heel Lock, a unique pull-cord heel design that keeps the rearfoot perfectly secure while traversing uneven surfaces.
- Molded QU!KFOAM insole for plush in-foot comfort.
- Stable and durable rubber outsole with articulated flex zones in the forefoot for better grip off-road.
- High abrasive rubber heel crash pad provides durability and shock dispersion.
- QU!K Flex 4Foot Engineering provides for a natural and balanced toe-off and enhances ground contact for better acceleration
- QU!KFOAM, a midsole material comprised of an EVA rubber blend with PU coating that provides excellent durability, cushioning and responsiveness.

# TAROKO 2



**M** Y055-0724  
Ebony/ Saffron



**W** Y055-6825  
Moonlight Blue/ Golden

**M**

**Size:**  
7-13,14

**Weight:**  
310g

**Drop:**  
9mm

**Stack:**  
F/F: 17.5mm  
R/F: 26.5mm

**W**

**Size:**  
6-12

**Weight:**  
265g

**Drop:**  
9mm

**Stack:**  
F/F: 17.5mm  
R/F: 26.5mm



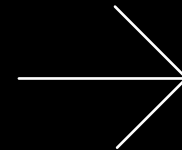


# TRAINING

361° QUEST TR

**„DO NOT CHASE  
PEOPLE, CHASE  
OPPORTUNITIES.  
WORK HARD, BE  
YOURSELF AND GO  
“ONE DEGREE BEYOND”  
YOUR OWN  
EXPECTATIONS“**

AMBASSADOR LARS PETERSEN - URBAN RUNNER





## TRAINING PROFILE

Functional training shoe for the journey through the WOD (workout of the day) and beyond.

## FEATURE / BENEFIT

- Breathable air mesh upper
- Fitz-Rite midfoot has soft internal webbing to keep the foot secure.
- Mono sock holds and supports the foot during high intensity workouts.
- ESS Shank is a denser foam material that adds protection and stability to the midfoot.
- Punched foam Lycra for ankle area comfort and breathability
- External heel counter locks the foot down for weight training stability.
- Full ground contact outsole of sticky rubber for lightweight traction.
- Powered by QU!KFOAM.

# QUEST TR



**M** Y821-0907  
Black/Ebony



**W** Y871-0907  
Black/Ebony

**M**

**Size:**  
7-13,14

**Weight:**  
297g

**Drop:**  
6mm

**Stack:**  
F/F: 11.5mm  
R/F: 17.5mm

**W**

**Size:**  
6-12

**Weight:**  
238g

**Drop:**  
6mm

**Stack:**  
F/F: 11.5mm  
R/F: 17.5mm



CORE BENEFITS



INTERNATIONAL SIZE CHART

MEN’S SIZES

US	7	7H	8	8H	9	9H	10	10H	11	11H	12	12H	13	14
UK	6	6H	7	7H	8	8H	9	9H	10	10H	11	11H	12	13
EURO	40	40,5	41,5	42	42,5	43,5	44	44,5	45	46	46,5	47	48	49
CM	/	25,5	26	26,5	27	27,5	28	/	28,5	29	29,5	30	31	32

WOMEN’S SIZES

US	6	6H	7	7H	8	8H	9	9H	10	10H	11	11H	12
UK	4	4H	5	5H	6	6H	7	7H	8	8H	9	9H	10
EURO	37	37,5	38	39	39,5	40	40,5	41,5	42	42,5	43,5	44	44,5
CM	23	23,5	24	24,5	25	/	25,5	26	26,5	27	27,5	28	/

## MERCHANDISE MATERIAL



\*Order via agent

## MARKETING SUPPORT





## OUT OF SIZES IN THE MIDDLE OF THE SEASON?

NO WORRIES, WE HAVE STOCK!  
PLACE A DIRECT ORDER IN OUR  
B2B WEBSHOP 24/7 OPEN!

<https://361europe.itsperfect.it/webshop/>

361EUROPE.COM





#BEYOND  
EXPECTATIONS  
361



#BEYOND  
EXPECTATIONS  
361°